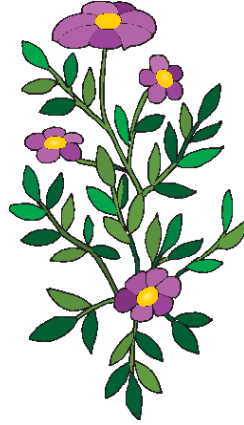


Audubon Society of Central Maryland

*19th  
Annual!*

# Native Plant Sale



Saturday, April 29, 2017

9am - 1pm

Rain or Shine!

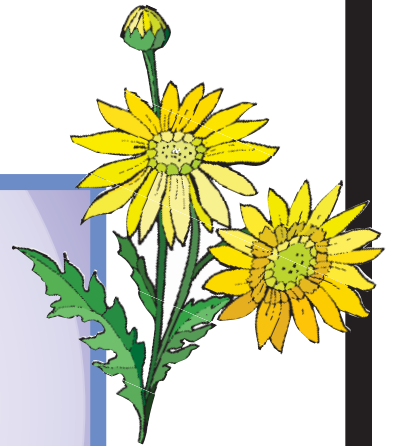


SHRUBS & TREES from \$12.00

PERENNIALS from \$6.00

ANNUALS (2017 availability  
to be announced)

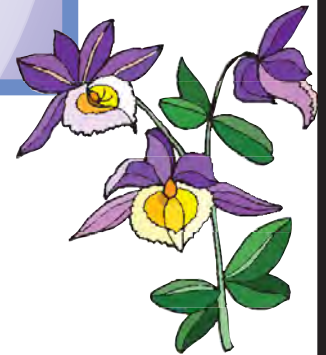
Check our website for details & plant lists:  
[www.centralmdaudubon.org](http://www.centralmdaudubon.org)



Audrey Carroll Audubon Sanctuary

13030 Old Annapolis Road

Mount Airy, MD 21771



Questions? Call 410-997-9492 or 301-831-5060

email: [centralmdaudubon@gmail.com](mailto:centralmdaudubon@gmail.com)

The Audrey Carroll Audubon Sanctuary is located at 13030 Old Annapolis Road, near Mount Airy, Maryland, 21771, as shown on the map below.

Audubon Society of Central Maryland Sanctuary grounds are available for low-impact use by individuals and small groups, for day activities such as birdwatching and hiking.

When you are at the Sanctuary for our Native Plant Sale, please feel free to explore our network of walking trails. See one of our volunteers for a map.

For other uses and larger groups, please contact Mark Kulis, the ASCM Sanctuary Manager, by email at [mk21496@hotmail.com](mailto:mk21496@hotmail.com).

For more information on the Audubon Society of Central Maryland and our sanctuaries, activities and projects, please visit our web site at [www.centralmdaudubon.org](http://www.centralmdaudubon.org).

